

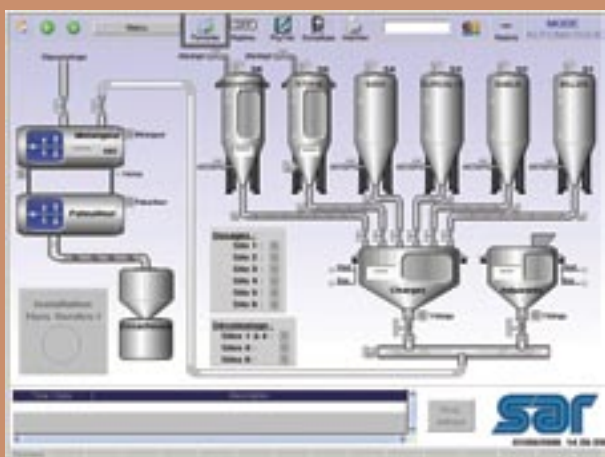


A Signature S.A.-created road sign in France



Customer Success Story

Signature S.A. Agnetz, France



Synoptic Overview of Paint Production

About Signature SA

Compagnie SIGNATURE, a 100 percent subsidiary of Burelle SA, is the European leader in road signage and road marking. With more than 1,200 employees, Compagnie SIGNATURE has subsidiaries in Spain, Great Britain, Switzerland, Germany, Belgium, The Netherlands, Czech Republic, Romania, Greece and France. France's SIGNATURE S.A., with a network of 37 service points, contributes to the improvement of road safety and street comfort. As a complement to its design, manufacturing and installation activities, SIGNATURE proposes new services in the area of road asset management, with the aim of guaranteeing the perpetuity of road marking facilities.

ICONICS Software Deployed

SIGNATURE S.A. selected ICONICS GENESIS32 HMI/SCADA suite including the GraphWorX32 and AlarmWorX32 components, BatchWorX™ Lite, ReportWorX (a component of ICONICS BizVizManufacturing Intelligence suite), and WebHMI add-on.

Project Summary

SIGNATURE S.A. sought a solution to assist in the automation of its paint plant using a batch process. SIGNATURE S.A., assisted by system integrator INFOVISION Process Control, implemented GENESIS32 and BatchWorX to meet its goal of automating paint production. GENESIS32 was used to connect PLCs (most manufactured by different supplier) to SIGNATURE S.A.'s system, while the AlarmWorX32 module was installed to ensure traceability. WebHMI was added for remote control via production manager and process engineer stations. In addition, SIGNATURE S.A. utilizes ReportWorX for daily alarm, event and production data reports. ReportWorX also generates a production report by orders of fabrication (with associated alarms), as well as a weekly report for total consumption of raw materials used in production.



BatchWorX is a product from Infovision

Key Features

SIGNATURE S.A. sought several specific features that ICONICS was able to meet and exceed. The selected solution must integrate with batch process software as well as be ISA 88-compliant (as BatchWorX is aptly able to demonstrate). The application must have traceability (as achieved via AlarmWorX32) as well as provide robust, in-depth reporting (a goal met handily by ReportWorX). The company had a planned project development duration of three months, followed by an expected three weeks of startup/implementation. ICONICS, in tandem with INFOVISION Process Control, was comfortable in meeting the time expectations.

Conclusion

Gaining SIGNATURE S.A. as a customer was a good sign for ICONICS. By quickly and exactly meeting the company's needs, ICONICS is also being considered for additional projects including the automation of another workshop and a project involving the connection of all PLCs within the plant for traceability.

Production Schedule at Signature S.A.

SIGNATURE S.A. Paint Production Recipe in Progress

Finally, the selected vendor was required to integrate with two Schneider PLCs and one by Siemens, as well as with the firm's MSDE database – all handled with ease by the ICONICS solutions.

Benefits of the System

SIGNATURE S.A. sought an “open and evolving system” in meeting its paint plant automation. With ICONICS, they quickly received state-of-the-art solutions to assist in their HMI/SCADA, batch processing, alarm management, and reporting. In addition, the company is able to add on other needed components from ICONICS comprehensive GENESIS32 HMI/SCADA and BizViz Manufacturing Intelligence suites as new needs arise.

Product Highlight

ReportWorX™

ReportWorX comes complete with standard report templates for Downtime Analysis, Production, Water, EPA, Quality, Energy, and more. Reports can be automatically published to Web Servers so that any user can access reports with a standard Web browser over the Internet or within a secure corporate intranet. Reports are converted to Web forms, allowing for easy management of archived reports.