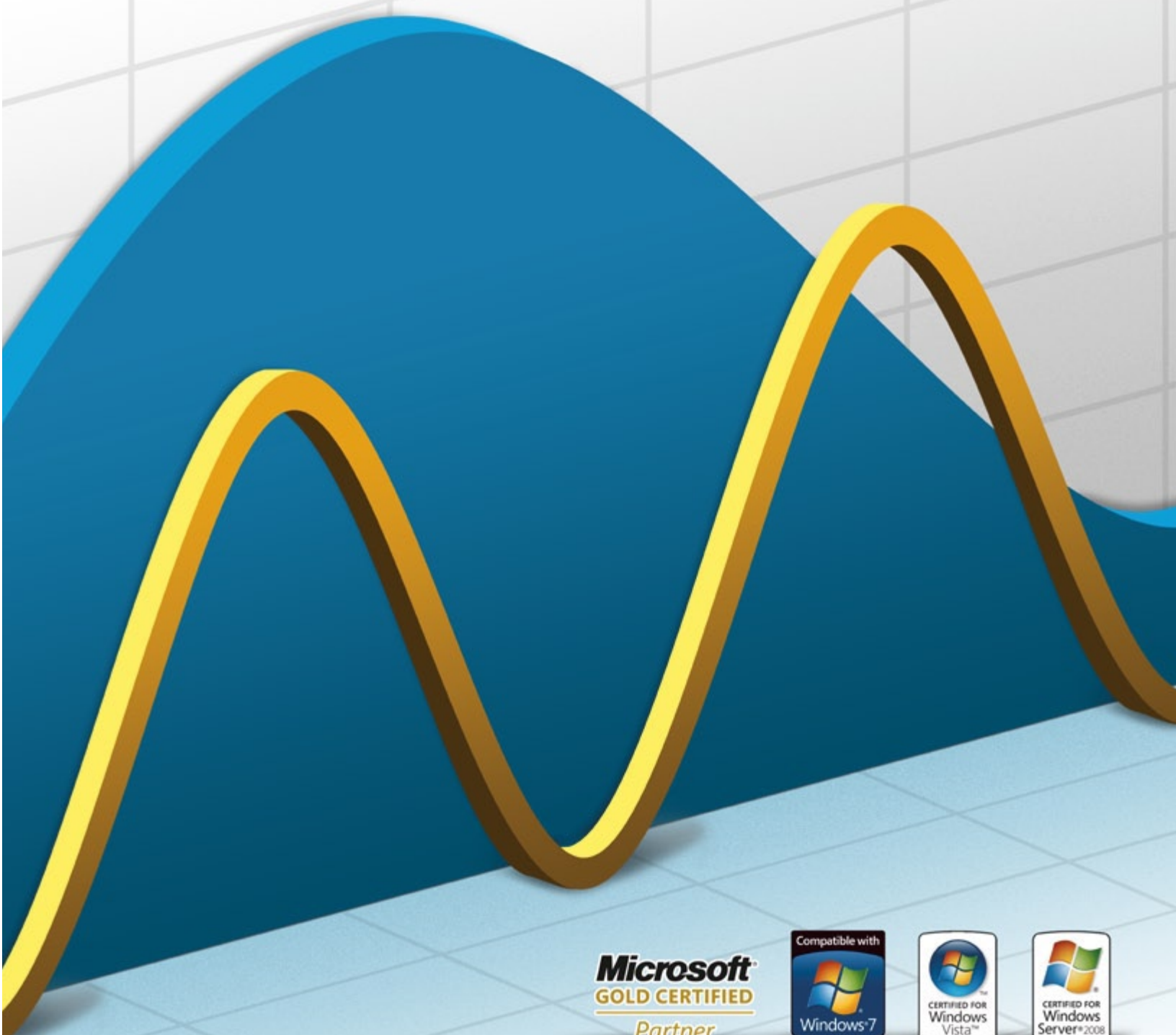




# Hyper Historian™

64-Bit High Performance Plant Historian



**Microsoft**  
GOLD CERTIFIED  
Partner



# The 64-bit revolution is here are you ready?

The ICONICS Hyper Historian is the first true Microsoft Windows® 64-bit, high-performance, robust, scalable and secure Enterprise-wide, real-time Data Historian. Designed for the most mission critical applications demanding the highest level of availability, the Hyper Historian delivers unparalleled performance with very efficient use of computer resources. This is the first Plant Historian to be certified for Microsoft Windows Vista™ and Microsoft Windows Server 2008, and includes tight integration with SQL Server 2005/2008. This technology makes the Hyper Historian from ICONICS the best-in-class, real-time Plant Historian for any Microsoft 64-bit operating system.



Data storage and retrieval is faster than traditional relational databases and other real-time historians. Combining a high compression, advanced, Swinging Door algorithm, and designed from the ground up taking advantage of 64-bit hardware and software architectures, the Hyper Historian can access more CPU power and memory than traditional 32-bit based historians, giving users the highest performance possible on all standard PC-based platforms.

## Key Features and Benefits

- Designed from the ground up using 64-bit and .NET
- Robust, High-Performance and Scalable
- OPC-UA, DA and HDA-Compliant
- Industry Standard Data Connectivity
  - SNMP, BACnet
  - OPC-UA, OPC DA, OPC HDA
  - Databases
- Optimistic Concurrent Multiuser Configuration
- Web-based Configuration and Administration
- Unattended Data Archiving and Back-up
- 2D and 3D Real-time Charts
- Real-time and Historical Data Replay
- Multiple Remote Data Collectors
- Store and Forward Technology
- Integration with ICONICS BizViz™ Solutions
  - Reporting, Data Bridging
  - Dashboards and Portals
- Alarm Management
- Diagnostic and Data Tracing with NT Event Logs
- Integrated Redundancy

## Hyper Historian Architecture



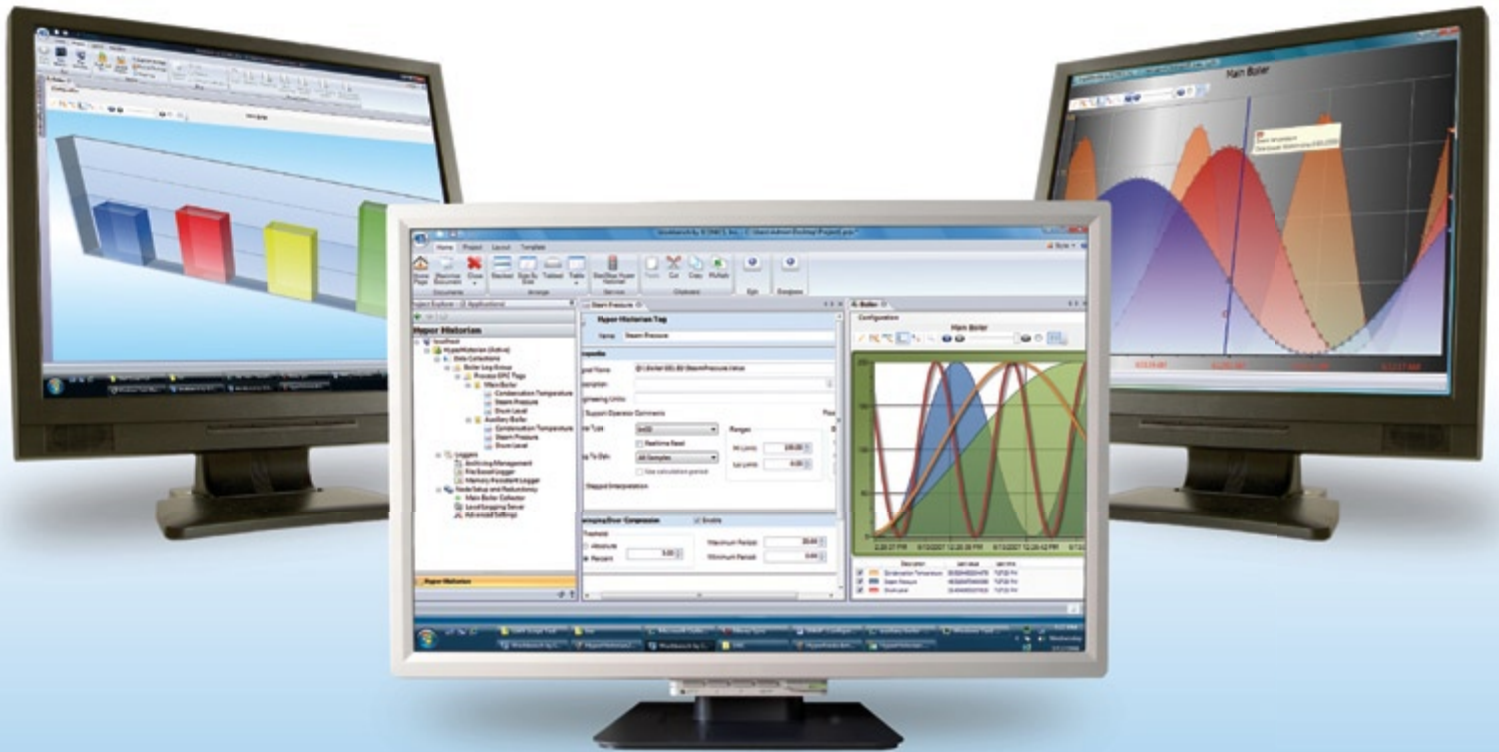


## Unparalleled Performance

The Hyper Historian uses an advanced Swinging Door data compression algorithm for high speed data collection of up to 100,000 data events per second on reference hardware, for all your real-time, enterprise-wide information.

## Designed for the Most Demanding Applications

For mission critical applications that need uninterrupted access and collection of data, the ICONICS Hyper Historian has robust, built-in software redundancy. Automatic Store-and-Forward technology ensures data integrity, in the event there is a system upset or communications disruption.



## Industry Standard Data Connectivity, SQL Integration and Automatic Archiving

The Hyper Historian uses advanced data integration, providing unsurpassed connectivity to any device via OPC-DA, OPC-UA, OPC-HDA, OPC XML, SNMP, BACnet or database values. Easily collect information from multiple plants, facilities and the enterprise. Data sources such as PLCs, I/O devices, HMI applications, and network devices can be collected and stored for reporting and analytics.

The Hyper Historian includes an industry standard SQL Query interface, enabling tight integration with any SQL compatible database such as Microsoft SQL Server 2005/2008, MySQL, Oracle and many others.

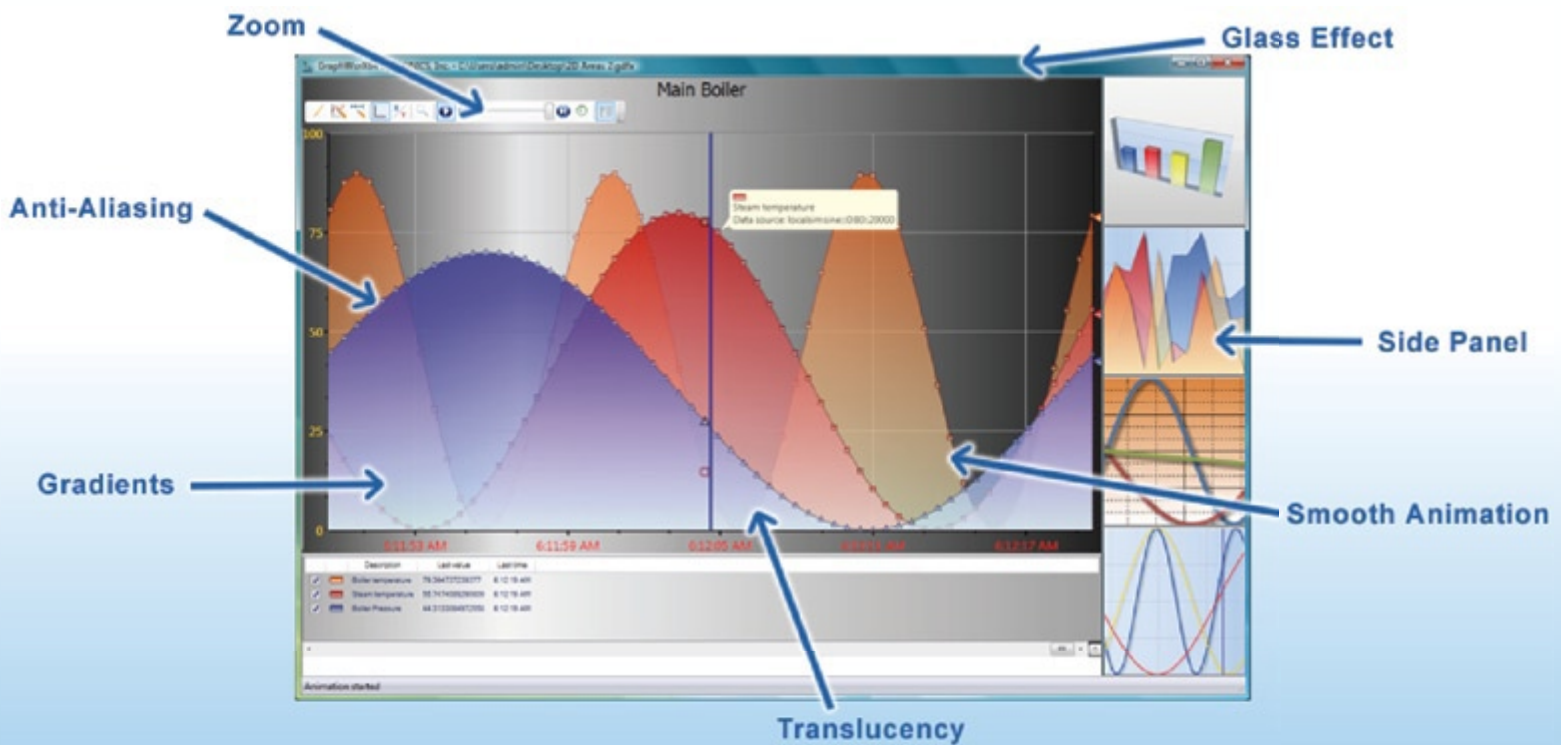
Archiving of data has never been easier. The Hyper Historian has a unique, automatic archiving feature that allows for routine or triggered scheduling of data archives, freeing up disk space and backing up files for long term storage and retrieval.

***“Productivity tools lower operational cost and total cost of ownership”***

## Web-enabled Thin-Client Configuration and Operational Management

The engineering cost of an automation project is typically 60 percent of the total project cost. The Workbench inside the Hyper Historian features a thin client, optimistic, concurrent design, acting as the central configuration environment and operator interface. This robust, secure workbench reduces engineering cost and speeds up the development time for any project.

The runtime operational interface is a rich user interface allowing for complete visualization of real-time and historical data with 3D and 2D charts. The Workbench's advanced configuration console performs complete service management and has integrated layout/project management and remote pack-and-go deployment capabilities.



## Powerful Real-time and Historical 3D Charts, Data Analysis and Reporting

From the Workbench operators can add fully customizable 3D trends and charts that bring applications to life. Choose from the rich library of 3D charts such as X vs. Y, logarithmic, bar graph, strip chart recorder, circular and more to build clear and accurate representations of real-time and historical data. Use the intuitive ribbons and galleries to customize trends by adding color, gradients, smooth animation, translucency, glass effects, anti-aliasing and more to make data analysis clear and straightforward. Drag and drop data sources during runtime and view multiple trends simultaneously.

Plotting both real-time and historical data in the same trend plot allows last week's data to be compared with current information. Trend production numbers against a target. Plot batch data against a known recipe curve and more.

*“Leverage the most advanced technology”*

Data can also be viewed in tabular formats with the ability to enter operator comments as well as manage lab data and audit trails in accordance with 21 CFR Part 11 policies.

The Hyper Historian can connect with all ICONICS BizViz applications to create best-in-class reporting, analysis, portal or data bridging applications.



## Industry Challenges

**Today's plant operations are faced with the need to perform better and to be more competitive with fewer resources.** For plant-level operations, today's systems need to connect to different infrastructures for data gathering and users need to analyze and visualize data in real time.

The demand to produce products faster or streamline operations is increasing across the globe. Having access to your plant data is key to staying competitive today.

ICONICS and the Hyper Historian Enterprise-wide plant historian allow you to gain that competitive advantage, by organizing all your real-time information from across the enterprise.

### Designed for Use in Many Industries

For more than 20 years, ICONICS has developed leading-edge software tools for automation, manufacturing, building control and information management customers. ICONICS has shipped over 225,000 products that are installed in over 40,000 plants spanning the globe for the following primary markets:

- Automotive
- Oil/Gas
- Petrochemicals
- Pharmaceuticals
- Building Controls
- Food & Beverage
- Water & Wastewater
- Government
- Robotics
- Entertainment
- Machine Builders
- Security Access
- Utilities
- Airports
- Power & Energy
- Postal Systems

### Global Support

The ICONICS SupportWorX™ Technical Support Services Plans are a key component of ICONICS' Global Support and Services Programs. SupportWorX Plans provide telephone and e-mail support from ICONICS sales channels and support centers around the globe. Expert assistance is available 24/7/365.

***“Turn your real-time data into a Competitive Advantage”***





VISIT US AT [WWW.ICONICS.COM](http://WWW.ICONICS.COM)

## WORLDWIDE OFFICES

### ICONICS World Headquarters

100 Foxborough Blvd.  
Foxborough, MA 02035  
Tel: 508 543 8600  
Fax: 508 543 1503  
Email: [info@iconics.com](mailto:info@iconics.com)

### ICONICS Europe

#### Czech Republic

Tel: 420 377 183 420  
Fax: 420 377 183 424  
Email: [czech@iconics.com](mailto:czech@iconics.com)

#### France

Tel: 33 45 019 1180  
Fax: 33 45 001 0870  
Email: [france@iconics.com](mailto:france@iconics.com)

#### Germany

Tel: 49 2241 16 508 0  
Fax: 49 2241 16 508 12  
Email: [germany@iconics.com](mailto:germany@iconics.com)

#### Italy

Tel: 39 010 46 0626  
Fax: 39 010 65 22 187  
Email: [italy@iconics.com](mailto:italy@iconics.com)

#### Netherlands

Tel: 31 252 228 588  
Fax: 31 252 226 240  
Email: [holland@iconics.com](mailto:holland@iconics.com)

### ICONICS Asia

#### Australia

Tel: 61 297 273 411  
Fax: 61 297 273 422  
Email: [australia@iconics.com](mailto:australia@iconics.com)

#### China

Tel: 86 130 684 86069  
Email: [china@iconics.com](mailto:china@iconics.com)

#### India

Tel: 91 22 67291029  
Fax: 91 22 67291001  
Email: [india@iconics.com](mailto:india@iconics.com)

### ICONICS UK

#### United Kingdom

Tel: 44 1384 246 700  
Fax: 44 1384 246 701  
Email: [info@iconics-uk.com](mailto:info@iconics-uk.com)

### WHY CHOOSE ICONICS?

**ICONICS**, Inc. is a leading provider of award-winning enterprise manufacturing intelligence and automation software solutions and implementation services. **ICONICS** solutions deliver real-time visibility into all enterprise operations and systems, helping companies to be more profitable, more agile and more efficient. **ICONICS** products have delivered value within over 250,000 installations worldwide and have been chosen by more than 70% of Fortune 500 manufacturers.



2008 ISV/SOFTWARE SOLUTIONS  
PARTNER OF THE YEAR-WINNER

