



Approaching the Tower
at Amsterdam Airport Schiphol



Customer Success Story

Schiphol Airport Amsterdam, The Netherlands



Main Menu Screen at Schiphol Airport

About Amsterdam Airport Schiphol

Amsterdam Airport Schiphol is the national airport of The Netherlands. It's the 10th biggest airport in the world based on total number of passengers (about 44 million) and 14th based on the number of tons of cargo shipped. The airport is built as one large terminal split into three large departure halls, with further expansion planned.

ICONICS Software Deployed

Amsterdam Airport Schiphol selected an OEM version of GENESIS32™ including GraphWorX™ and AlarmWorX™ for this project. This suite of software tools now runs on over 30 PCs for the application of monitoring over 300,000 tags.

"The Alias functionality within the product saved us a lot of time in building displays. This enabled us to reuse the same display for another floor."

Guy van Lingen, Project Engineer
JCI Netherlands

Key Features

The project was implemented by JCI Netherlands utilizing M5, an OEM version of GENESIS32. It runs on three Microsoft Windows terminal servers and allows the 30 operators to work on the system at the same time.

Included in the building controls are systems for:

- HVAC
- Fire
- Security
- Lighting
- Telephone
- Water Systems

The complete project consists of 10,000 GraphWorX images. The system is equipped to handle over one million alarms and events per month.

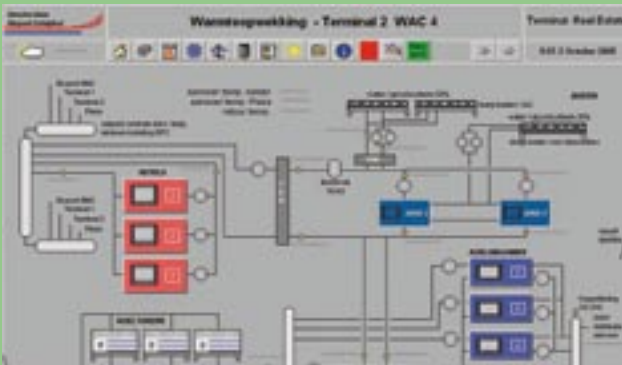
Benefits of the System

The provided solution is based on an open system, making it easier to develop bigger projects in the future. Also, it's now easy to retrieve data out of the systems without writing converters. One of the biggest advantages for the customer is easy expansion of the system to other platforms including Web browsers such as Internet Explorer (via WebHMI™) and mobile operating systems such as PocketPC (via Pocket GENESIS™).

Product Highlight

WebHMI™

WebHMI™ provides remote Internet or Intranet connectivity to your enterprise system. Using a standard Web browser, a remote PC can instantly browse to view live OPC and visualization information from any ICONICS GENESIS32 product on the network.



A Cooling Control Screen at Amsterdam Airport Schiphol



Weather Monitoring Control Screen

Conclusion

The Schiphol Project is certainly impressive. With 30 screens, 300,000 tags, three servers and 30 operator stations, it's one of the biggest Building Automation systems on the planet. The system has now been running for three years without any major complications.

Product Highlight

GENESIS 32™

Pocket GENESIS™ makes it possible to harness the power of GENESIS32 from handheld PCs. From any hardware running Windows CE, users have access to live HMI displays, alarms, trend information and more.